

# Magnolia Monitoring LLC Products

---



## Omnalink OM500 GPS Monitor

**Omnalink OM500** is a GPS monitoring device for offender tracking, house arrest, and alternative incarceration, providing real-time location monitoring for close supervision.

---



## Omnalink Victim Fob

**Stalker Alert** is a GPS tracking solution for stalking and domestic violence victims, providing real-time monitoring, safe zones, and instant alerts for enhanced safety.

---



## ShadoWatch

**ShadoWatch** is a discreet, wrist-worn device that provides reliable real-time GPS monitoring, similar to ankle monitors. Sized like a consumer smartwatch, it runs on a secure, custom OS built for the demands of community supervision.

---



## SCRAM Remote Breath

The **SCRAM Remote Breath** is a Portable Alcohol Breathalyzer is a wireless device with Facial Recognition, GPS, LTE, and real-time BAC results, providing secure, accurate monitoring for criminal justice and addiction programs.

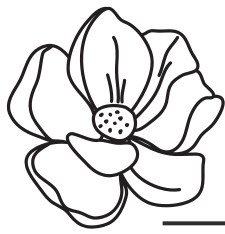
---



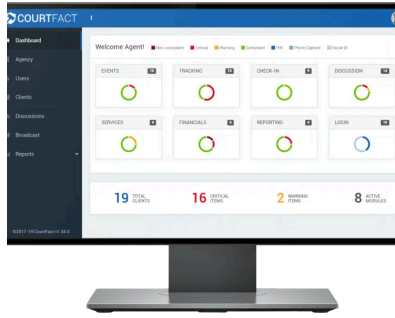
## Secured Smartphones

**Secured Smartphones** is a solution to provide ways for courts, agencies and service providers to be able to eliminate issues such as lack of internet access or ability to procure a smart device.

---

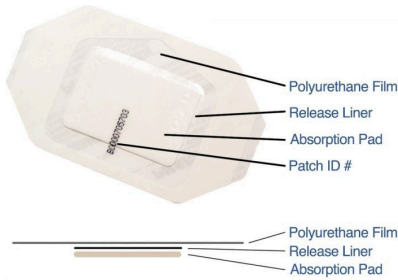


# Magnolia Monitoring LLC Products



## CourtFact Case Management

**CourtFact Case Management** Access client data from any device, anytime—add notes, upload images/videos, and view reports with ease, wherever you are.



## PharmChek Sweat Patch

**PharmChek Sweat Patch** captures sweat for drug testing, using secure protocols and minimal privacy intrusion, with accurate results through lab analysis.



## Redwood Toxicology Lab

**Redwood Toxicology Lab** is committed to providing the highest standards in drug and alcohol testing, backed by decades of experience, innovation, and a dedication to customer service.



## LifeSafer Ignition Interlock

**LifeSafer Ignition Interlock** is a court-approved ignition interlock device that requires the driver to pass a breath alcohol test before the vehicle will start. It's widely used for DUI/DWI offenders to ensure sober driving as part of court or DMV requirements.



## GRADE Continuous Alcohol Monitoring

**GRADE Continuous Alcohol Monitoring** is Exclusively through CourtFact, this wrist-worn device offers 24/7 alcohol monitoring, transmitting data via smartphone.  
**Available October 2025.**